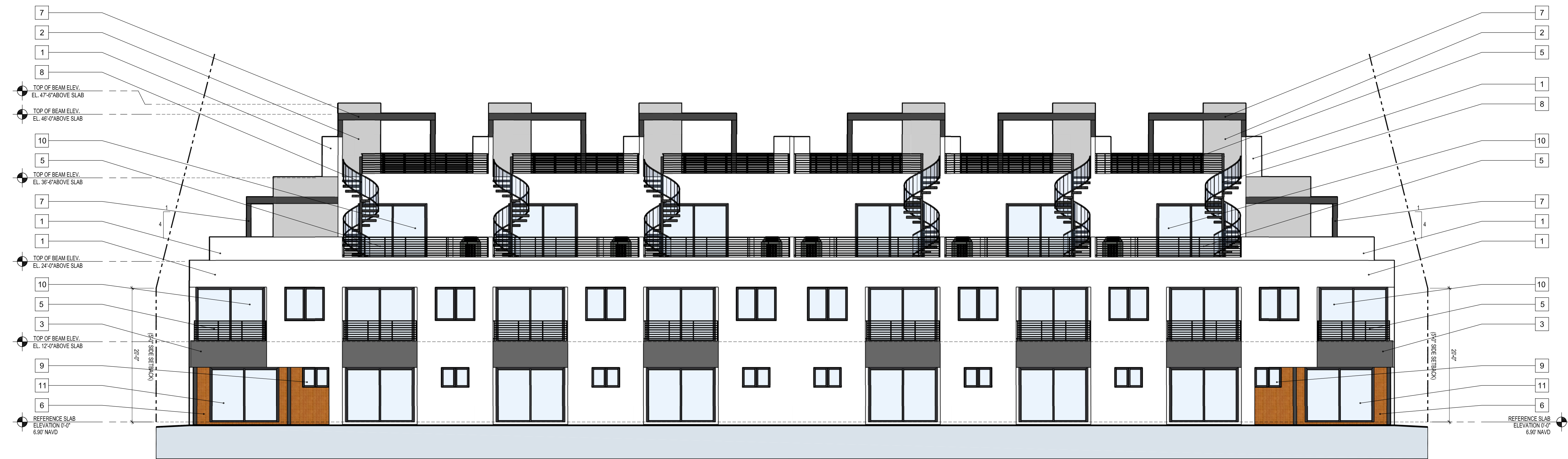


LEFT SIDE ELEVATION

SCALE: 1/8" = 1'-0"



REAR ELEVATION

SCALE: 1/8" = 1'-0"

ELEVATION LEGEND

- 1 SMOOTH CEMENTITIOUS FINISH (COLOR: WHITE) OVER CMU WALL (TYP.)
- 2 TEXTURED CEMENTITIOUS FINISH (COLOR: LIGHT GRAY) OVER CMU WALL
- 3 TEXTURED CEMENTITIOUS FINISH (COLOR: DARK GRAY) OVER CMU WALL
- 4 PORCELAIN TILE WOOD GRAIN FINISH (COLOR: CHERRY) OVER MASONRY
- 5 MIN. 42" HIGH POWDER COATED ALUMINUM GUARDRAIL SYSTEM PER CODE (COLOR: BRONZE)
- 6 POWDER COATED ALUMINUM FINS (COLOR: DARK GRAY)
- 7 POWDER COATED ALUMINUM PERGOLA (COLOR: DARK GRAY)
- 8 POWDER COATED ALUMINUM SPIRAL STAIRCASE (COLOR: DARK GRAY)
- 9 IMPACT RATED GLASS OVERHEAD GARAGE DOOR (FRAME COLOR: BRONZE)
- 10 IMPACT RATED SLIDING GLASS DOOR (FRAME COLOR: BRONZE)
- 11 IMPACT RATED SWING GLASS DOOR W/ SIDELITES (FRAME COLOR: BRONZE)
- 12 IMPACT RATED SWING GLASS DOOR (FRAME COLOR: BRONZE)
- 13 IMPACT RATED FIXED WINDOW (FRAME COLOR: BRONZE)
- 14 IMPACT RATED DOUBLE CASEMENT WINDOW (FRAME COLOR: BRONZE)
- 15 IMPACT RATED FIXED WINDOW SYSTEM W/ CASEMENT PANEL (FRAME COLOR: BRONZE)

#25009

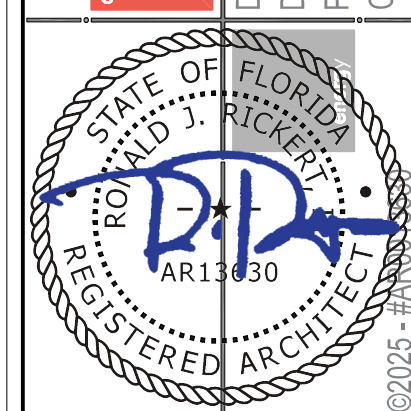
architecture + energy of intelligence

S.E. 5TH STREET TOWNHOMES

FOR: MARSAL MAINTENANCE CORP.

3305 S.E. 5TH STREET

POMPANO BEACH, FL 33062

REVISIONS:
DRC ZONING REVIEW 12-1-2025DATE: 9-2-2025
DRAWN / CHECKED: LNU / LR
PERMIT: .
CONSTRUCTION: .

A5.1